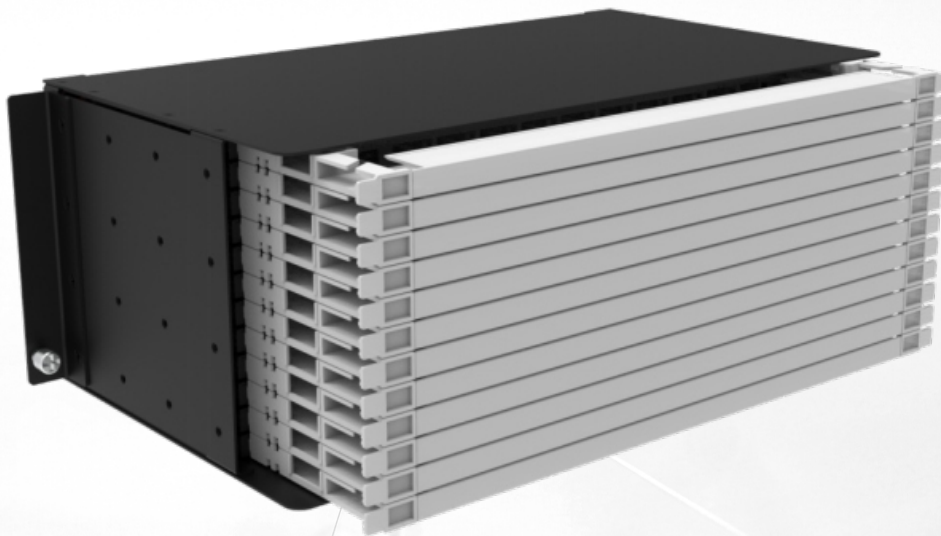




NCP1 High Density Fiber Optic Distribution Unit

Pre-Terminated Modular Tray System



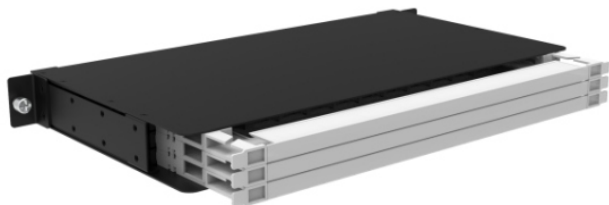
- 19" standard ODF Unit, easy, single-person installation
- Modular design with slide-out tray, each tray can accommodate 48 LC fibers
- 1~6U height available, and each 1U can accommodate 3 trays
- Optional deployment methods include MPO-LC/SC, PLC, TAP, splicing, and patching

Description

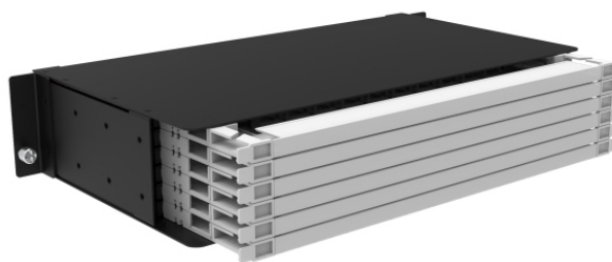
The NCP1 is a modular, low-loss, high-density ODF Unit. It supports multiple deployment methods, including MPO-LC/SC, PLC splitting, TAP, splicing, and patching.

The modular and slide-out tray design provides customers with a professional, reliable, and flexible cabling solution, improving connectivity performance in high-density fiber management systems. A variety of functional trays and cabling accessories are available to enhance system flexibility and ensure an optimized user experience.

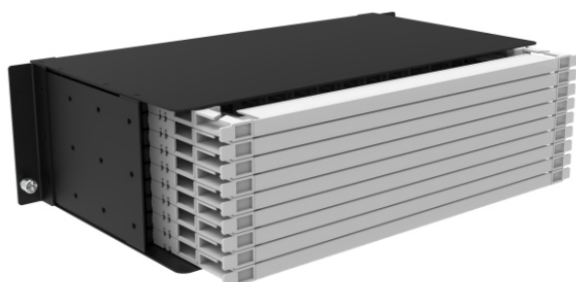
Product Model And Appearance



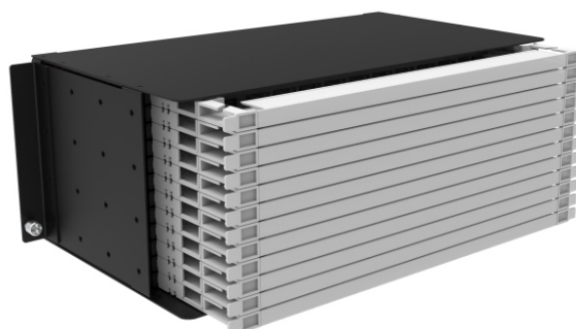
NCP1-1U



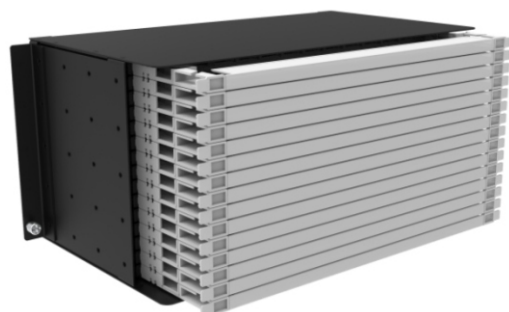
NCP1-2U



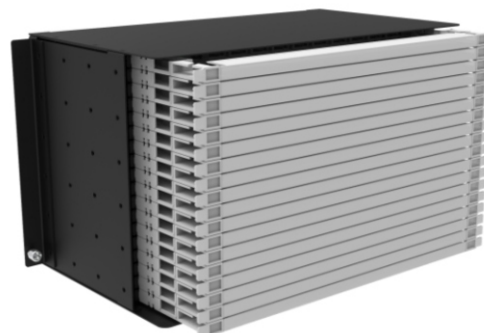
NCP1-3U



NCP1-4U



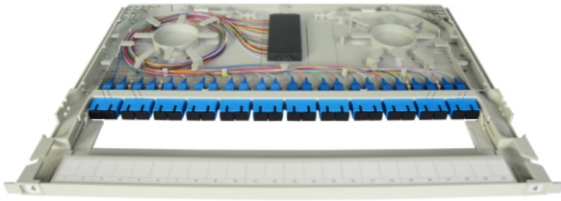
NCP1-5U



NCP1-6U

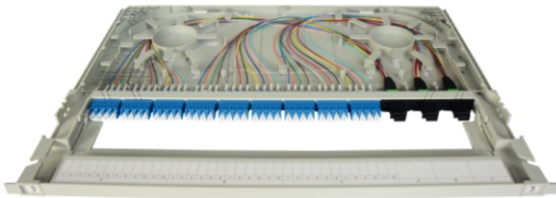
Model	Size	Number of Tray	Maximum capacity			
	Width × Depth × Height (mm)		MPO-LC	MPO-SC	LC-SC	PLC
NCP1-1U	482×295×44.4	3	9 groups of 12F	3 groups of 12F	144/72	12 groups - 1×8LC
NCP1-2U	482×295×88.5	6	18 groups of 12F	6 groups of 12F	288/144	24 groups - 1×8LC
NCP1-3U	482×295×132.5	9	27 groups of 12F	9 groups of 12F	432/216	36 groups - 1×8LC
NCP1-4U	482×295×176.5	12	36 groups of 12F	12 groups of 12F	576/288	48 groups - 1×8LC
NCP1-5U	482×295×221	15	45 groups of 12F	15 groups of 12F	720/360	60 groups - 1×8LC
NCP1-6U	482×295×265.5	18	54 groups of 12F	18 groups of 12F	864/432	72 groups - 1×8LC

Function Tray



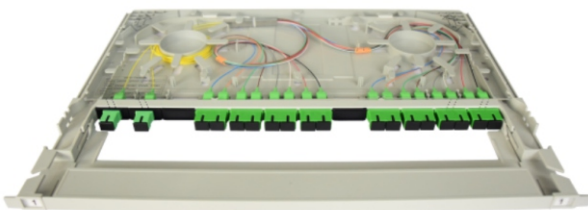
Splicing Tray

- Factory pre-terminated pigtails, splicing on-site
- Adapter options: LC, SC, MPO/MTP adapters available
- Each tray can accommodate 48LC connectors or 24SC connectors
- Each tray can accommodate 24MPO/MTP connectors, support ribbon splicing



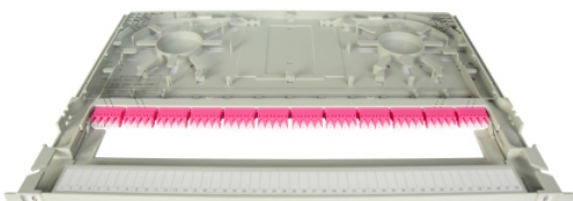
MPO-LC/SC Tray

- Factory pre-terminated, plug and play on site
- Adapter options :8-Fiber, 12-Fiber, 16-Fiber, and 24-Fiber MPO adapter
- Tray can be installed with LC, SC, MPO/MTP adapters
- MPO/MTP adapter optional on the left or right side
- Each tray can accommodate 4 MPO-LC-8-core patch cords, 3 MPO-LC-12-core patch cords, or 1 MPO-LC-24-core patch cord
- Each tray can accommodate one MPO-SC-16-core patch cord or one MPO-SC-12-core patch cord



PLC Tray

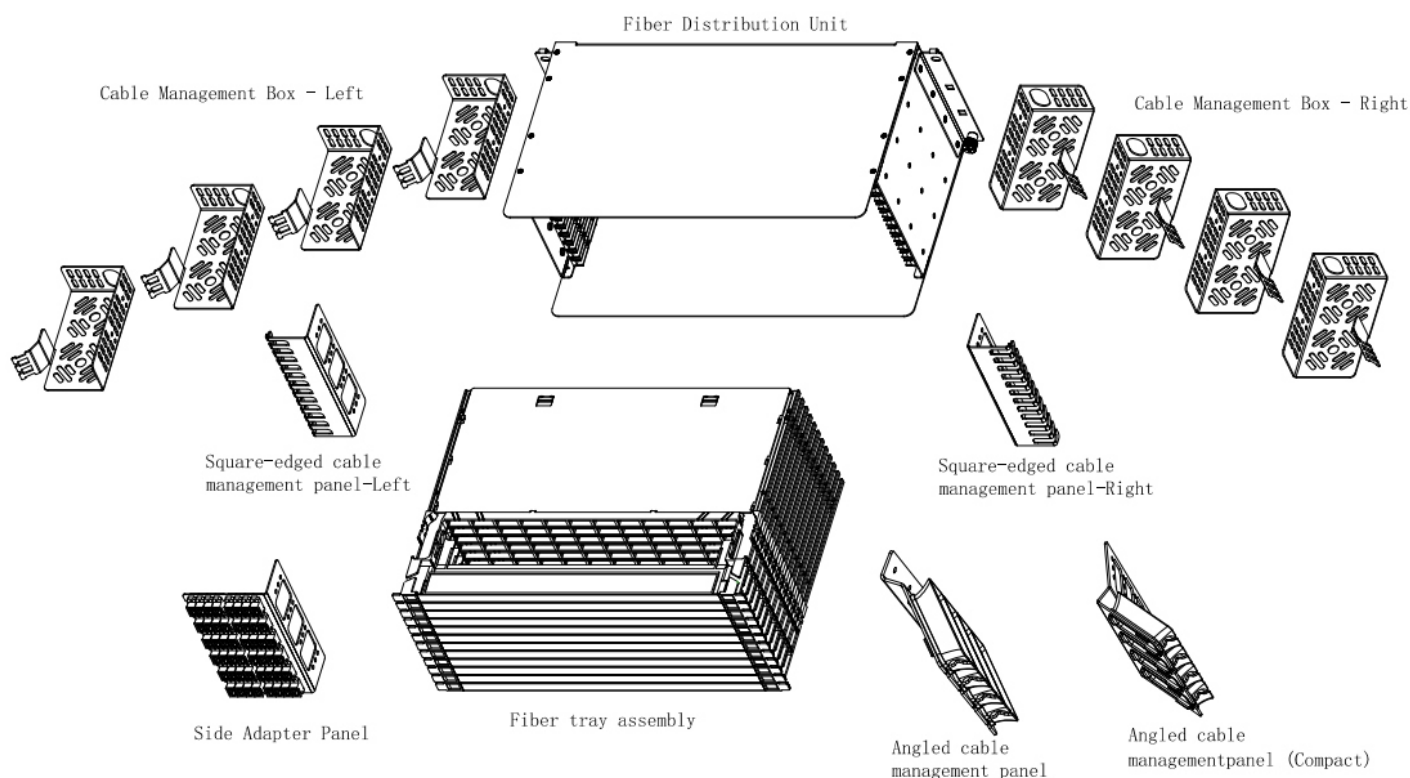
- Factory pre-terminated, plug and play on site
- Supports PLC splitters with various split ratios and output channels
- LC and SC adapters installable



Patching Tray

- Support direct connector-to-connector for flexible connections
- Adapter options: LC, SC, MPO/MTP adapters available
- Maximum capacity: LC-40 Fibers; SC-20 Fibers; MPO-20 adapters

ODF Unit Structure



Technical Parameters

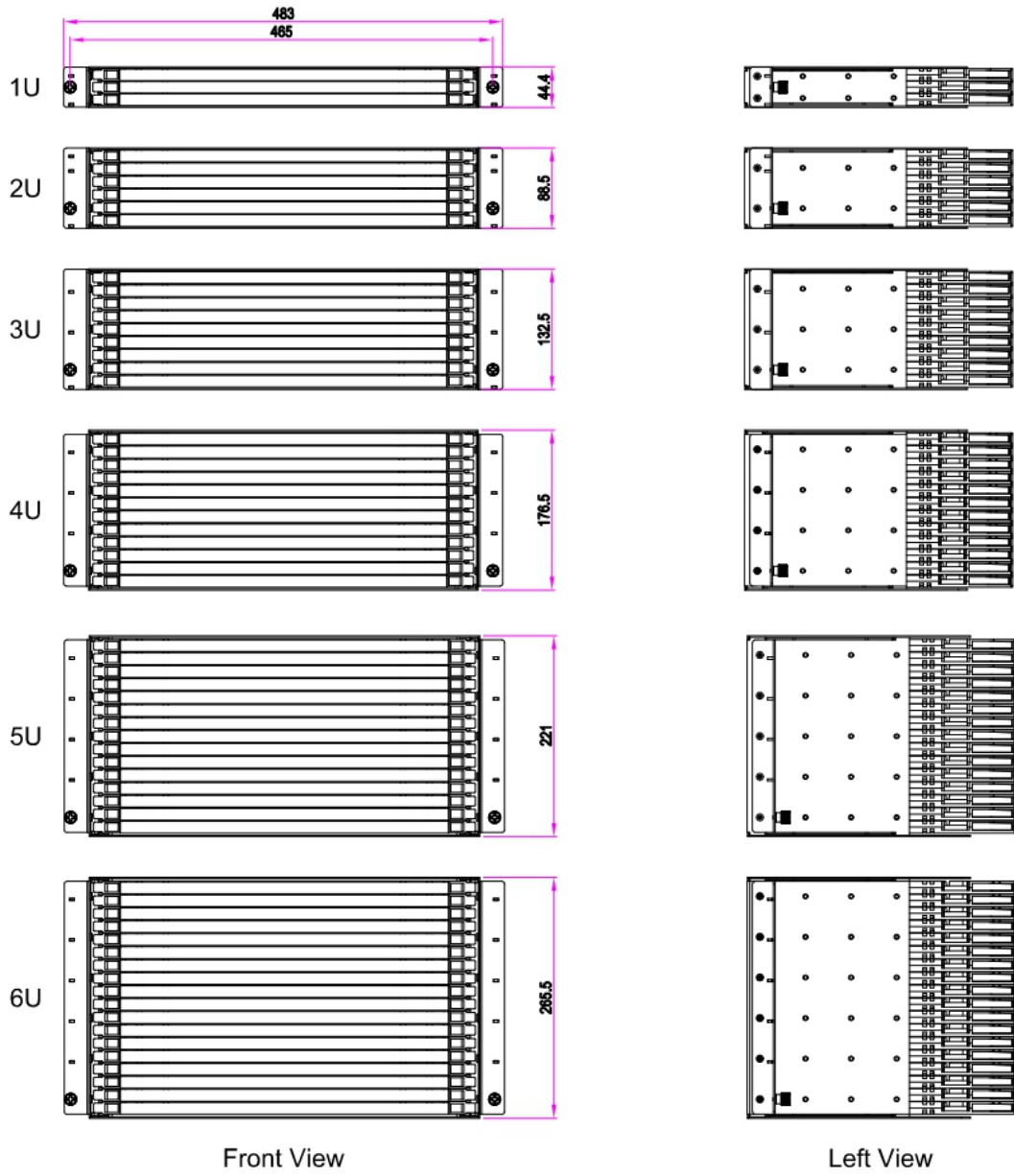
Operating Temperature	-25°C ~ +55°C
Storage Temperature	-25°C ~ +55°C
Relative Humidity	≤85%(+30 °C)
Atmospheric Pressure	70kPa ~ 106kPa
Enclosure Material	cold-rolled steel sheets
Tray Material	PC+ABS
Enclosure Dimensions	483mm × 255mm × 1U~6U
Enclosure Capacity	Each 1U contains three trays
Tray Capacity	48 core LC

Performance Parameters

Output connector insertion loss	SM:UPC≤0.3dB; APC≤0.3dB; MM:UPC≤0.2dB
Output connector return loss	SM:UPC≥50dB; APC≥60dB; MM:UPC≥35dB
Input connector insertion loss	MPO (SM:APC≤0.7dB; MM:PC≤0.7dB)
	MTP (SM:APC≤0.35dB; MM:PC≤0.35dB)
Input connector return loss	MPO(SM:APC≥55dB; PC≥40dB; MM:PC≥20dB)
	MTP(SM:APC≥60dB; MM:PC≥35dB)

Note: SM: single mode, MM: multimode

NCP1 2D View

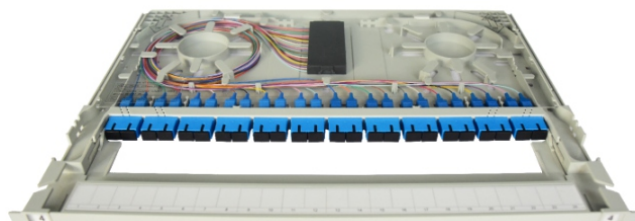
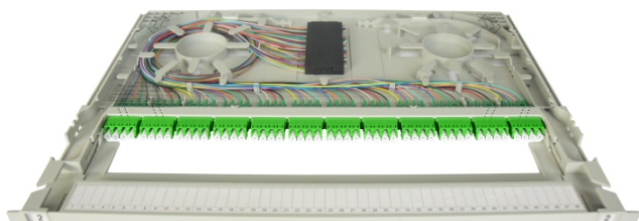


Ordering Information



ODF Unit-NCP1

NCP1 - EM - SP - B - 9004 - 4U	
	1 2 3 4 5 6
1-Model	NCP1
2-Configuration	EM:Empty container
3-Material	SP:Cold rolled steel sheet
4-Surface spray	B: Fine sand texture
5-Spray color	9004:RAL9004
6-Enclosure height	1U; 2U; 3U; 4U; 5U; 6U



Fiber Splicing Tray-NCB1_S

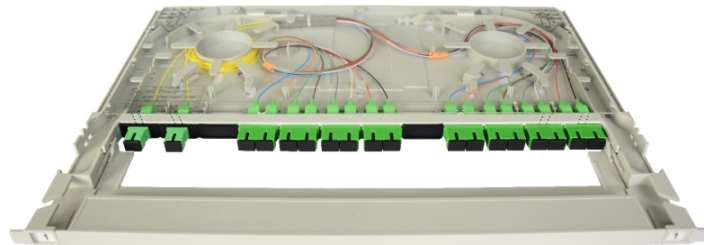
NCB1_S - AP - P - Grey - 12SLD - G657.A1 - UPC	
	1 2 3 4 5 6 7
1-Model	NCB1_S
2-Configuration	AP: with adapter and pigtail
3-Material	P:Plastic
4-Color	Grey; Black
5-Front adapter	12SLD:12Pcs LC quadruple adapter; 12SD:12Pcs SC duplex adapter
6-Fiber Type	G652D; G657.A1; OM1; OM3; OM4; OM5
7-Polish Type	UPC/APC

Note: 1. Maximum capacity: LC-48 core/SC-24 core;



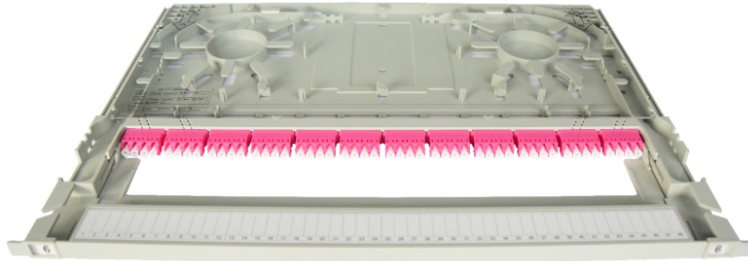
Transfer Tray-NCB1

$\frac{\text{NCB1} - \text{AP} - \text{P} - \text{Grey} - 3 \times 12 - \text{MPO/APC} - \text{LC/UPC} - \text{G657.A1}}{1 \quad 2 \quad 3 \quad 4 \quad 5 \quad 6 \quad 7 \quad 8}$	
1-Model	NCB1
2-Configuration	AP: with adapter and pigtail
3-Material	P:Plastic
4-Color	Grey; Black
5-Number of Patch Cords and Fiber Count	3×12; 4×8; 2×16; 1×12; 1×24
6-Input Connector	MPO/PC; MPO/APC; MTP/PC; MTP/APC
7-Output connector	LC/UPC; LC/APC; SC/UPC; SC/APC; CS/UPC; CS/APC; SN/UPC
8-Fiber Type	G657.A1; OM1; OM3; OM4; OM5
<small>Note: 1. Maximum capacity: 3 12-core MPO/MTP-LC cables; 1 12-core MPO/MTP-SC cable;</small>	



Splitter Tray-NCB1_F

$\frac{\text{NCB1_F} - \text{P} - \text{Grey} - 2 \times 1:8 - \text{AWG} - \text{AL} - \text{SC/APC} - \text{SC/APC} - \text{G657.A1}}{1 \quad 2 \quad 3 \quad 4 \quad 5 \quad 6 \quad 7 \quad 8 \quad 9}$	
1-Model	NCB1_F
2-Material	P:Plastic
3-Color	Grey; Black
4-Number of Splitters and Fiber Count	2×1:8—2 pieces 1:8 splitters; 4×1:8—4 pieces 1:8 splitters
5-Splitting ratio	AWG—Equal; 20:80; 10:30:30:30
6-Operating wavelength window	AL: full band 1260 ~ 1650nm; D1: 1310 ~ 1550nm
7-Input connector	LC/UPC; LC/APC; SC/UPC; SC/APC
7-Output connector	LC/UPC; LC/APC; SC/UPC; SC/APC
9-Fiber Type	G657.A1
<small>Note: 1. Maximum capacity: 1 strip of 1:16SC/2 strips of 1:8SC/2 strips of 1:16LC/4 strips of 1:8LC;</small>	



Patching Tray-NCB1_P

NCB1_P - AD - P - Grey - 10SLD - Violet	
<div style="display: flex; justify-content: space-around; width: 100%;"> 1 2 3 4 5 6 </div>	
1-Model	NCB1_P
2-Configuration	AD: with adapter
3-Material	P:Plastic
4-Color	Grey; Black
5-Front adapters	10SLD: 10Pcs LC quadruple adapter; 10SD: 10Pcs SC duplex adapter
6-Adapter color	Blue; Aqua; Violet; Black
<small>Note: 1. Maximum capacity: LC-40 core/SC-20 core/MPO-20 end;</small>	



SHKE Communication Tech Co.,Ltd.

Add: 3/F, Building 1, Future Science Park,
No.1026 Songbai Road, Xili, Nanshan District
Shenzhen 518055 China

E-mail: market@shke.com.cn

Web: www.shke.com.cn