



MP3 Ultra High Density Patch Panel

Ultra-high density MPO/MTP fiber optic cabling system



- Ultra-high density fiber optic cabling
- Supports up to 1U-72F; 4U-288F
- 19-inch standard structure, can be installed in a cabinet/rack

Description

Mp3 is a modular, ultra-low-loss, high-density fiber optic wiring platform, mainly used in fiber optic access networks, data processing centers, CATV, local area networks, and other scenarios. Standard 19-inch rack installation, the module box and the box are made of high-quality cold-rolled steel plates, with strong anti-corrosion, wear-resistant, and rust-resistant characteristics. The maximum capacity of a 1U patch panel is 72 cores; the maximum capacity of a 4U patch panel can reach 288 cores. Modular design, 1U up to 3 modules are used in parallel in the patch panel. The pull-out design is easy for internal installation, and both the adapter panel and the LGX cassettes can be installed.

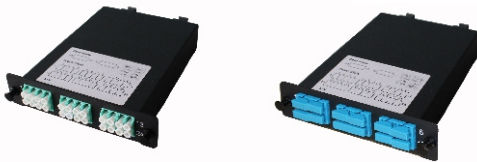
Product Model And Appearance



MP3-1U

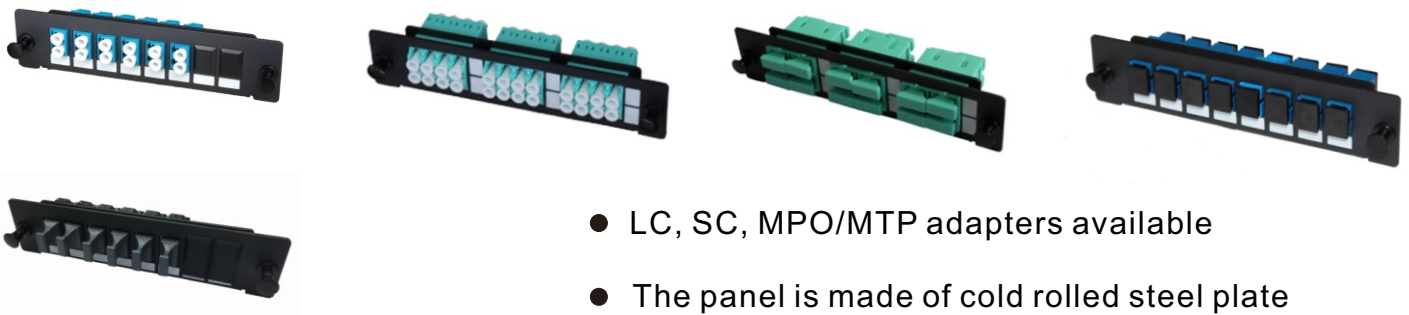


MP3-4U



MPB3 Cassettes

- Factory pre-terminated, plug and play during installation
- Provide MPO/MTP-LC module and MPO/MTP-SC module options
- Optional 24-core LC adapter or 12-core SC adapter



Adapter Panel

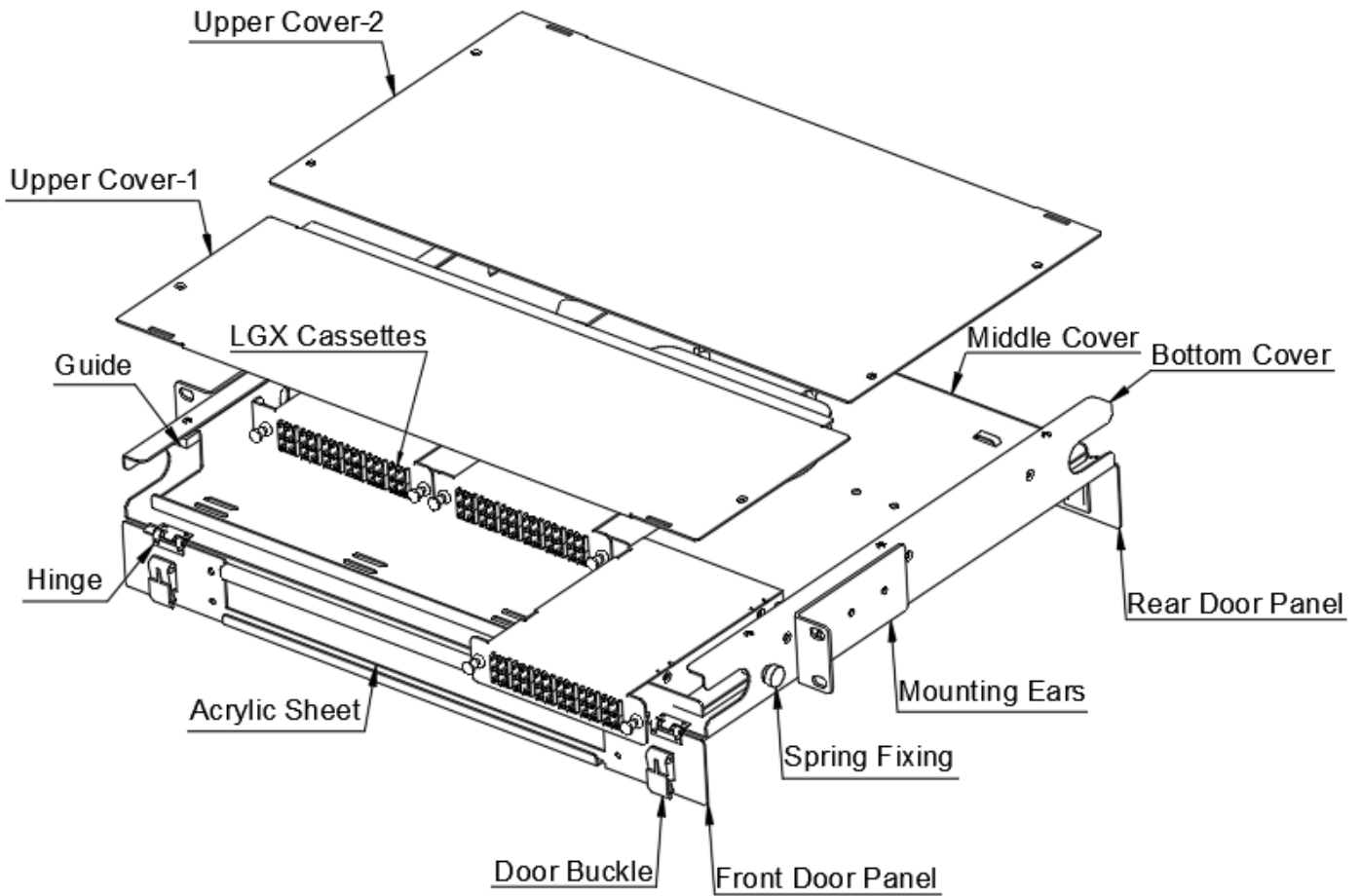
- LC, SC, MPO/MTP adapters available
- The panel is made of cold rolled steel plate
- Optional 12-core LC or 24-core LC adapter, 8-core SC or 12-core SC adapter



Splice Tray

- Each splice tray has a melting capacity of 12 fibers
- Layered structure, easy to operate
- The winding wheel can be used in two ways: semicircle and circle, which is compact and convenient.

Patch Panel Structure



Product Specifications	
Operating Temperature	-40°C ~ +60°C
Storage Temperature	-40°C ~ +60°C
Relative Humidity	≤85%(+30 °C)
Atmospheric Pressure	70kPa ~ 106kPa
Box Material	Cold Rolled Steel Plate
Dimensions(WxDxH)	483mm × 373mm × 1U
Number of cores	1U-72F;4U-288F

MPB3 Cassettes (MPO/MTP-LC/SC)



Technical Parameters	
Number of optical fiber cores	SC:12F/LC:24F
Fiber polarity	Type A
Front connector	LC straight quad (no ears) × 6Pcs / SC double (no ears) × 6Pcs
Back-end connector	SM:MPO/MTP (male) -APC
	MM:MPO/MTP (male) -PC
Box material	cold-rolled steel sheets
Dimensions (W×D×H)	130mm×142mm×34mm

Performance parameters		
Type	wavelength	Module return consumption (maximum)
MTP-LC/SC(MM)	850nm/1300nm	0.50dB
MTP-LC/SC(SM)	1310nm/1550nm	1.30dB
MPO-LC/SC(MM)	850nm/1300nm	0.75dB
MPO-LC/SC(SM)	1310nm/1550nm	1.50dB

Note: SM: single mode, MM: multimode

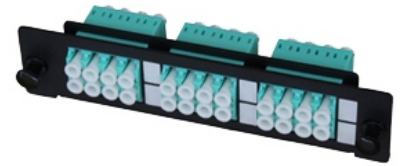
Adapter Panel

Technical Parameters	
Material	cold-rolled steel sheets
Color	Black (fine sand spray)
Adapter Type	LC Duplex × 6Pcs
Dimensions (W×D×H)	130mm×22mm×30mm



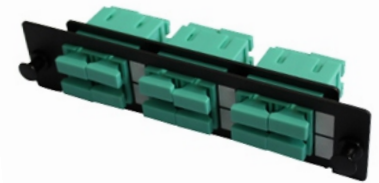
12F LC(dual)

Technical Parameters	
Material	cold-rolled steel sheets
Color	Black (fine sand spray)
Adapter Type	LC quadruple × 6Pcs
Dimensions (W×D×H)	130mm×22mm×30mm



24F LC(quadruple)

Technical Parameters	
Material	cold-rolled steel sheets
Color	Black (fine sand spray)
Adapter Type	SC double × 6Pcs
Dimensions (W×D×H)	130mm×22mm×30mm



12F SC(dual)

Technical Parameters	
Material	cold-rolled steel sheets
Color	Black (fine sand spray)
Adapter Type	SC single × 8Pcs
Dimensions (W×D×H)	130mm×22mm×30mm



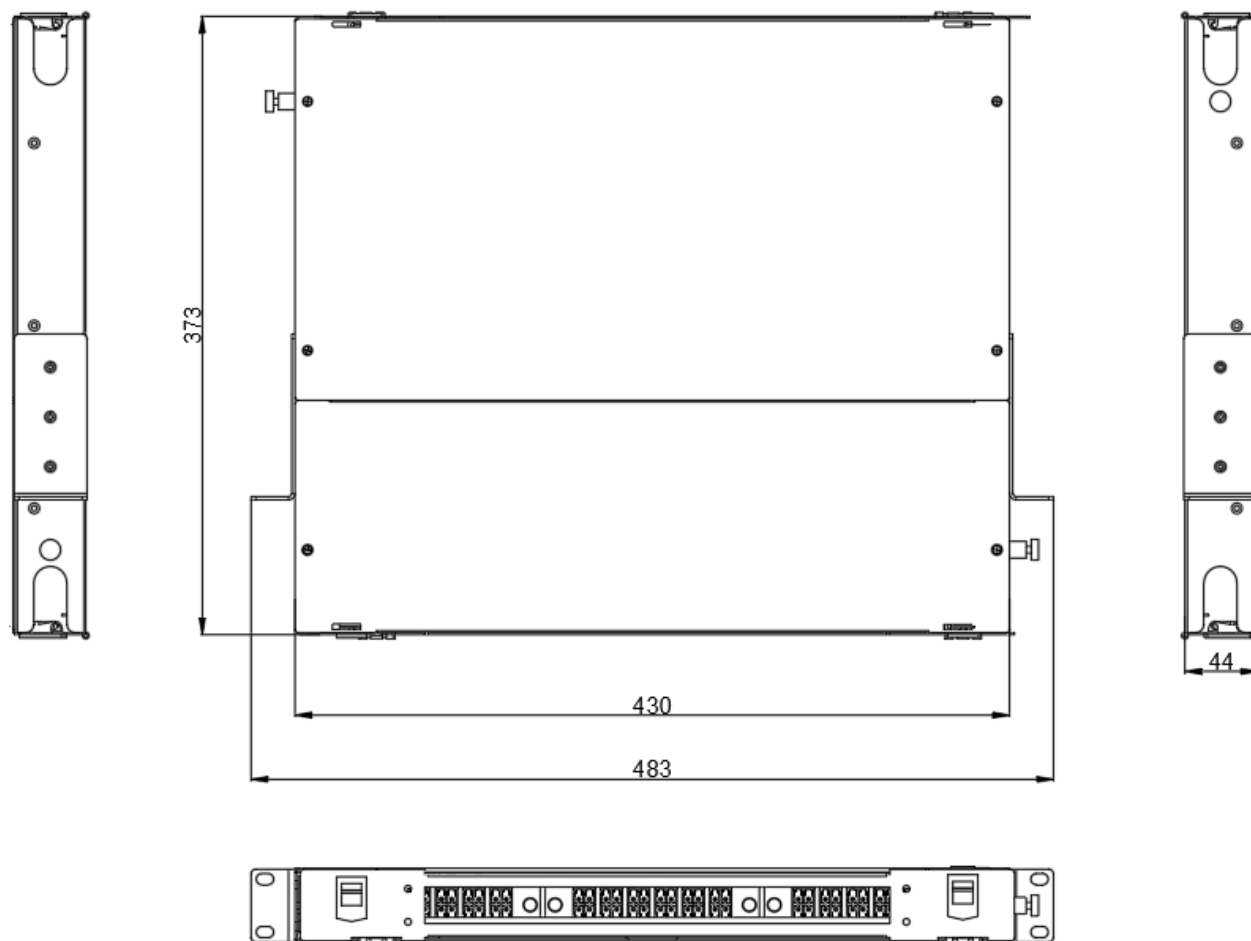
8F SC(single)

Technical Parameters	
Material	cold-rolled steel sheets
Color	Black (fine sand spray)
Adapter Type	MTP/MPO×6Pcs
Dimensions (W×D×H)	130mm×22mm×30mm



MPO/MTP Panel

MP3 2D View

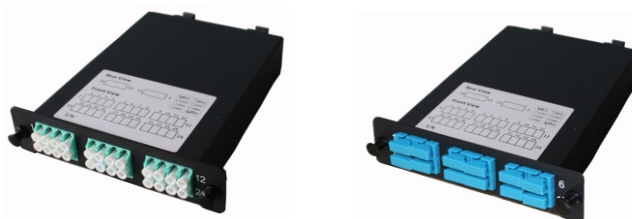


Ordering Information



Patch Panel-MP3

MP3 - EM - SP - B - 9004 - 1U	
	1 2 3 4 5 6
1-Model	MP3
2-Configuration	EM: empty box;
3-Main Material	SP:Cold Rolled Steel Plate
4-Surface Spraying	B:Fine sand texture
5-Spray Color	9004:RAL9004
6-Box Height	1U;4U
<p>Note: 1.MP3-1U can accommodate up to 3 cassettes. The blind plate is used to fill the gap when the box is not fully equipped with 3 modules. That is, under normal circumstances: the number of modules + the number of blind plates = 3;</p> <p>2.MP3-4U can accommodate up to 12 cassettes. The blind plate is used to fill the gap when the box is not fully equipped with 12 modules. That is, under normal circumstances: the number of modules + the number of blind plates = 12;</p>	



Cassettes/Panel-MPB3

MPB3 - EM - SP - B - 9004 - 2×12 - MPO/PC - LC/UPC - OM3	
	1 2 3 4 5 6 7 8 9
1-model	MPB3
2-Configuration	EM: empty box; AD: with adapter; AP: with adapter and jumper
3-Main material	SP:Cold rolled steel sheet
4-Surface spraying	B: Fine sand texture
5-Spray color	9004: RAL9004
6-Number of module jumpers	2×12:two 12F cables;1×24:one 24F cable;1×12:one 12F cable
7-Backend connector	MPO/PC; MPO/APC; MTP/PC; MTP/APC
8-Front end connector	LC/UPC; LC/APC; SC/UPC; SC/APC
9-Fiber optic connection type	G657A1; OM1; OM2; OM3; OM4; OM5
<p>Note: 1. Adapter requirements:①、LC:Inline quadruple short ear type/double short ear type;When the module box is 24 cores, there are two-way and four-way adapters to choose from. The need for a two-way or four-way adapter should be indicated in brackets after the product description;</p> <p>②、SC:Double short ear type;</p> <p>③、MPO:Quasi flange, one key facing upwards, the other key facing downwards;</p> <p>④、MTP:Standard flange, USCONEC specified, one key facing up, the other key facing down;</p>	



SHKE Communication Tech Co.,Ltd.

Add: 301, Factory Building 1, Nangang 2 Industrial Park,
No.1026 Songbai Road, Sunshine Community,
Xili Street, Nanshan District, Shenzhen, China
P.C.:518108

E-mail: market@shke.com.cn

Web: www.shke.com.cn

Copyright ©202508 SHKE Communication Tech Co.,Ltd All Rights Reserved.