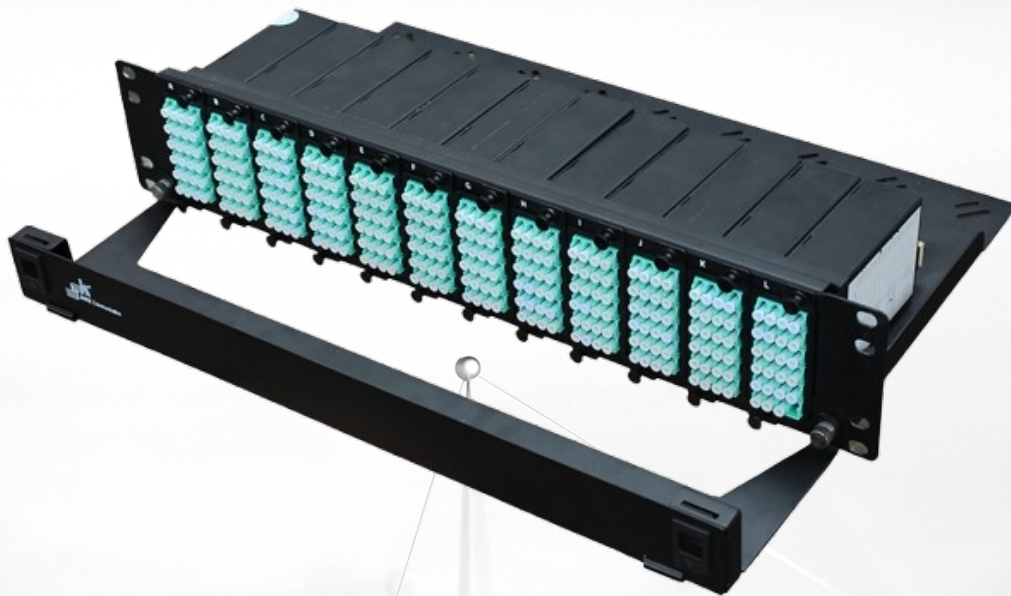




# MP2 Ultra High Density Patch Panel

Ultra-high density MPO/MTP fiber optic cabling system

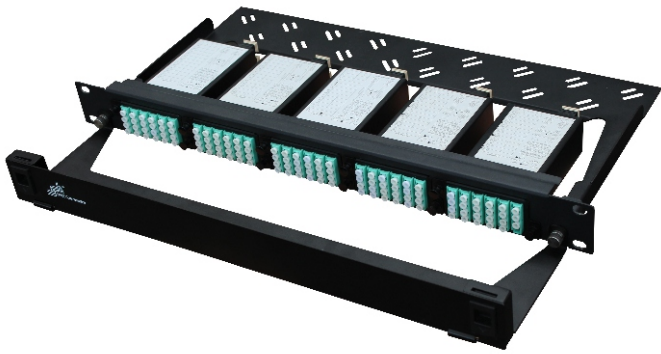


- Ultra-high density fiber optic cabling
- Supports up to 1U-120F and 2U-288F
- 19-inch standard structure, can be installed in a cabinet/rack

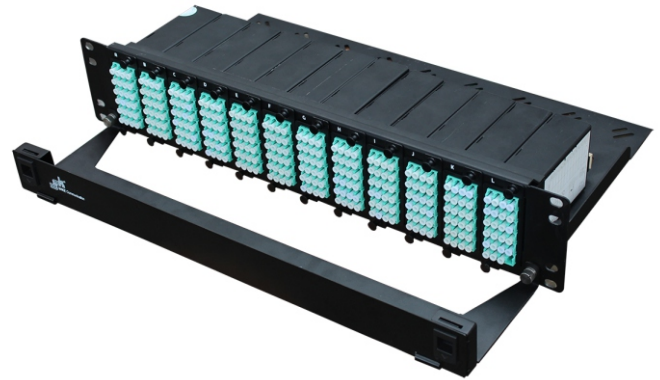
## Description

SHKE has been continuously innovating and developing in this field, and has launched the ultra-high-density MTP/MPO fiber optic wiring solution for data centers. The MTP/MPO connection standard is a miniaturized high-density fiber optic connector standard. A single connector is equipped with multi-core ribbon optical fiber, which has high density and stable and reliable connection. The MTP/MPO ultra-high-density wiring system completes the termination and testing of the MTP/MPO high-density fiber optic connector and the ribbon optical cable in the factory, and plugs and plays with the equipment on site, supporting the rapid deployment of user data centers. It is an ideal solution for the growing demand for high-capacity wiring in data centers, with the characteristics of simple installation, fast construction, compact design, high precision, and plug-and-play.

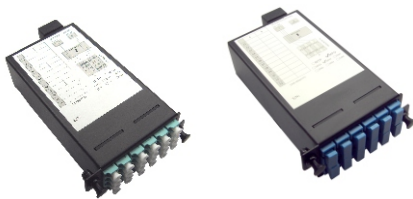
## Product Model And Appearance



MP2-1U



MP2-2U



MPB2 Cassettes

- Factory pre-terminated, plug and play during installation
- Optional 24-core LC adapter or 12-core SC adapter
- 1U can be equipped with up to 5 module boxes, and 2U can be equipped with up to 12 module boxes



Rj45 Patch Panel

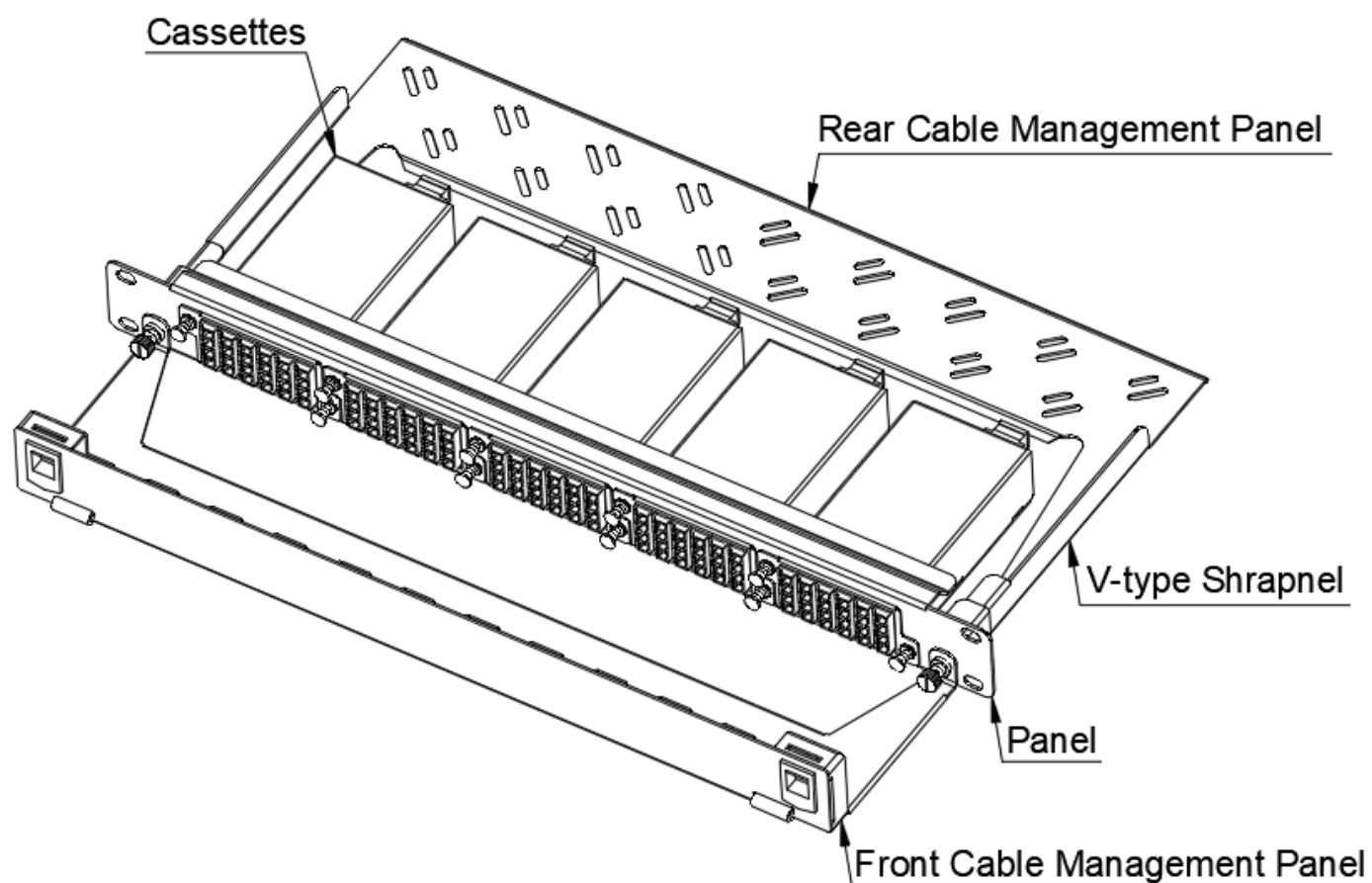
- Material: SPCC (cold rolled steel plate)
- Implementing modular jacks
- Color: Black



Blank Blind Plate

- Material: SPCC (cold rolled steel plate)
- Beautiful and dustproof
- Color: Black (fine sand texture spray)

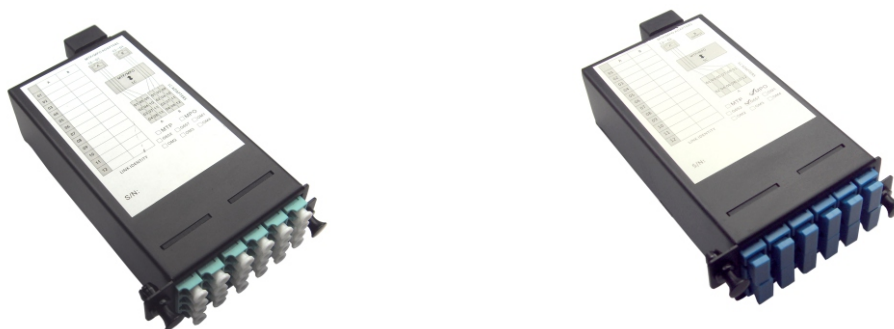
## Patch Panel Structure



### Product Specifications

Operating Temperature	-20°C ~ +55°C
Storage Temperature	-20°C ~ +60°C
Relative Humidity	≤85%(+30 °C)
Atmospheric Pressure	70kPa ~ 106kPa
Box Material	Cold Rolled Steel Plate
Dimensions(WxDxH)	483mm × 364mm × 1U
Number of cores	1U-200F;2U-288F

## MPB2 Cassettes (MPO/MTP-LC/SC)

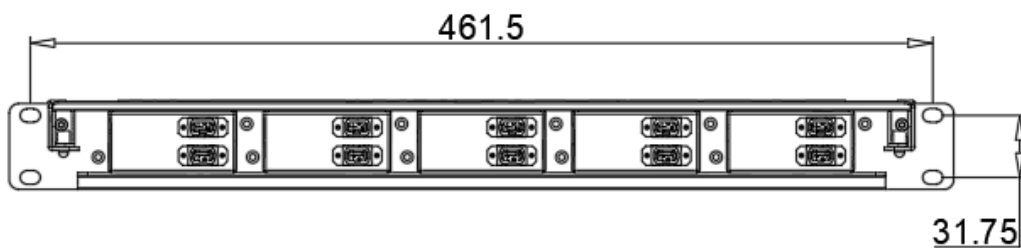
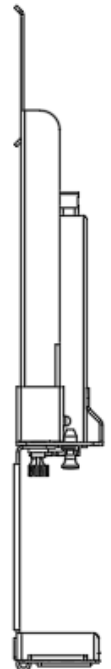
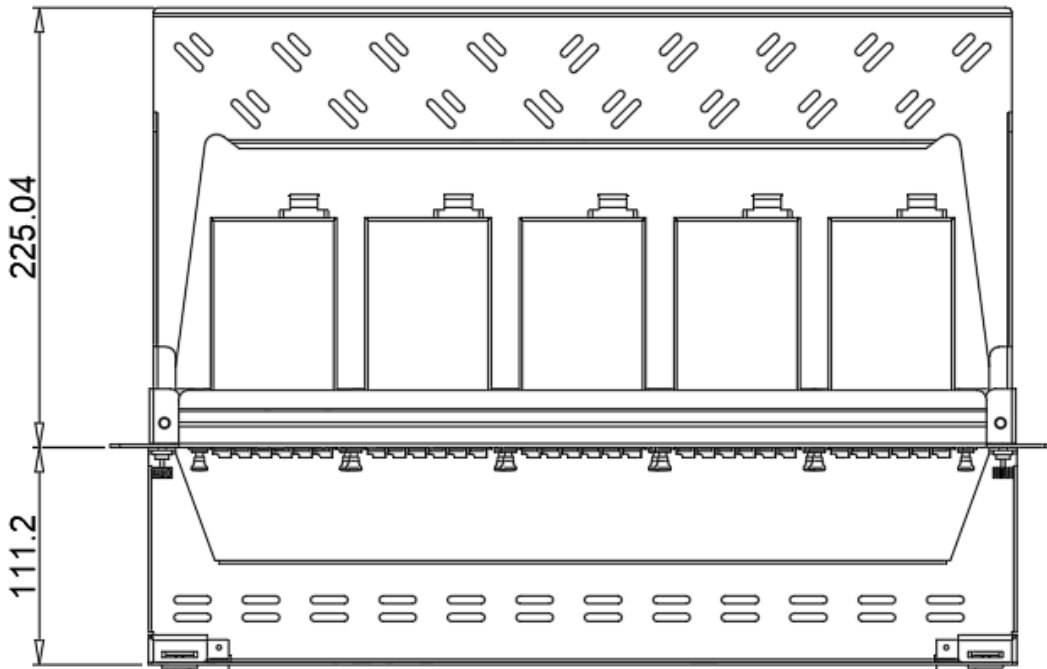
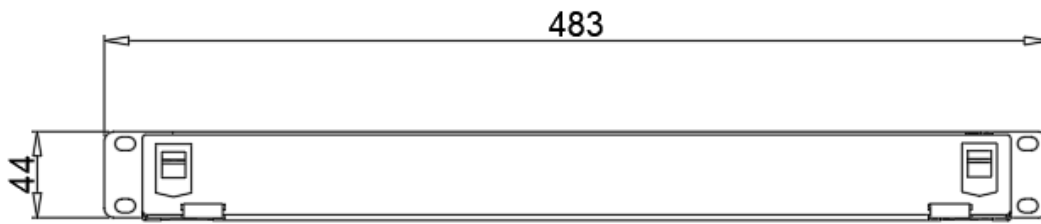


Technical Parameters	
Number of optical fiber cores	SC:12F/LC:24F
Fiber polarity	Type A
Front connector	LC straight quad (no ears) × 6Pcs / SC double (no ears) × 6Pcs
Back-end connector	SM:MPO/MTP (male) -APC
	MM:MPO/MTP (male) -PC
Box material	cold-rolled steel sheets
Dimensions (W×D×H)	88mm×118mm×34mm

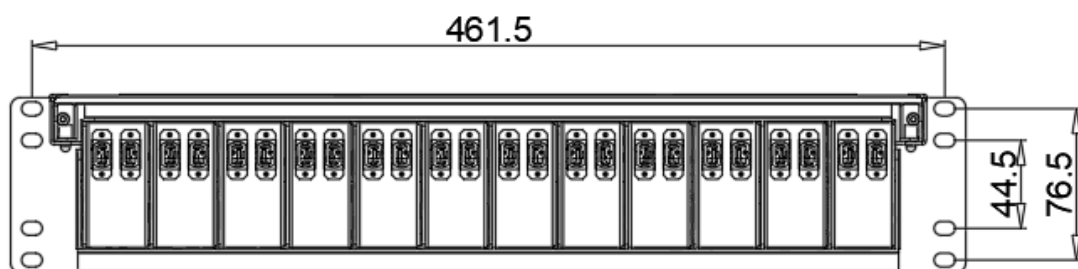
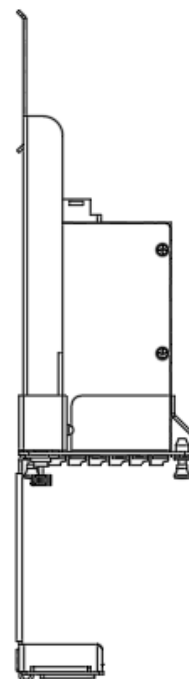
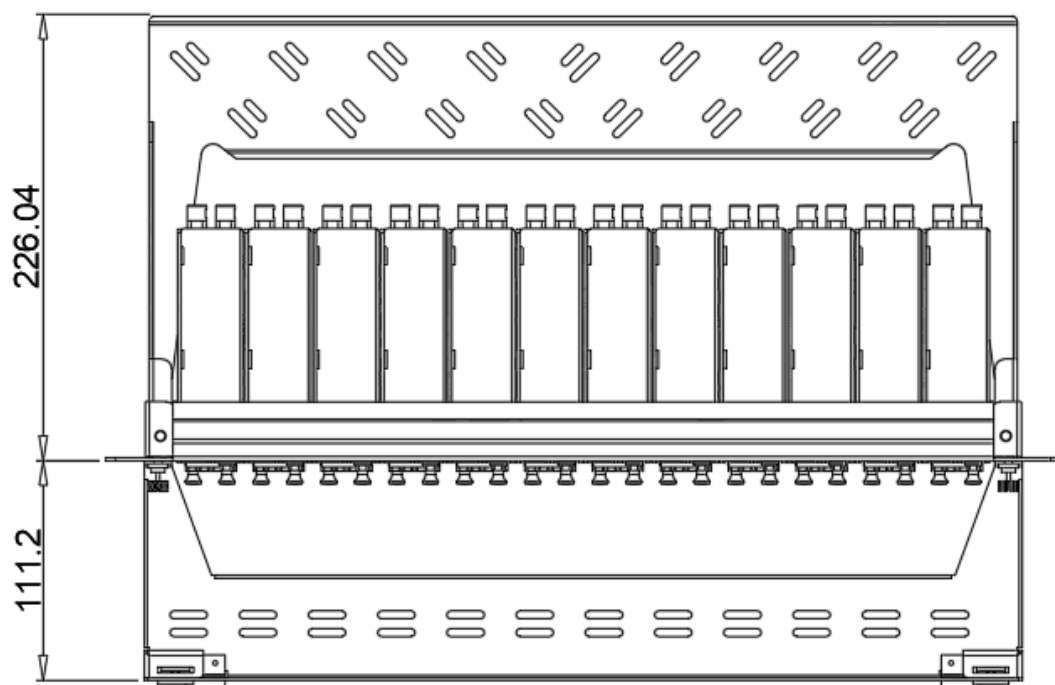
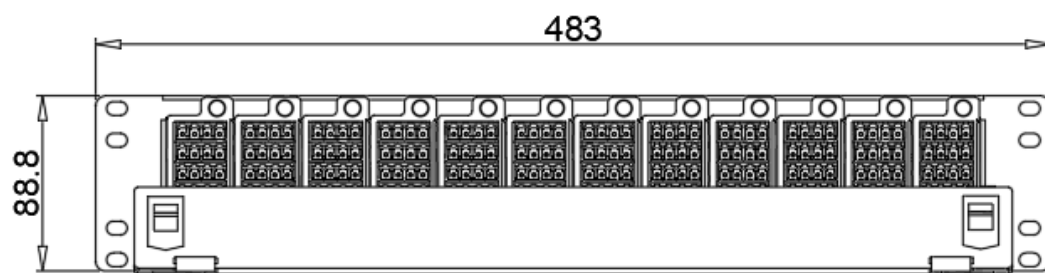
Performance parameters		
Type	Wavelength	Module return consumption (maximum)
MTP-LC/SC(MM)	850nm/1300nm	0.50dB
MTP-LC/SC(SM)	1310nm/1550nm	1.30dB
MPO-LC/SC(MM)	850nm/1300nm	0.75dB
MPO-LC/SC(SM)	1310nm/1550nm	1.50dB

Note: SM: single mode, MM: multimode

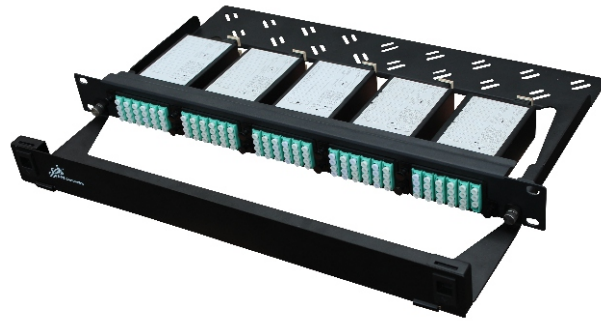
# MP2-1U 2D View



# MP2-2U 2D View

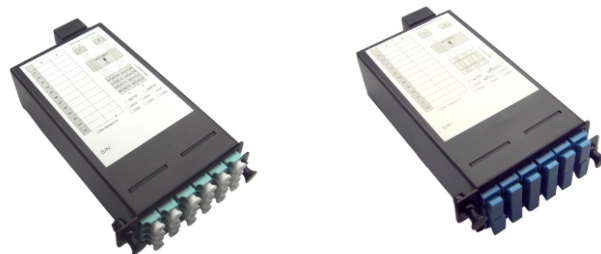


## Ordering Information



### Patch Panel-MP2

	MP2 - EM - SP - B - 9004 - 1U
	1 2 3 4 5 6
1-Model	MP2
2-Configuration	EM: empty box;
3-Main Material	SP:Cold Rolled Steel Plate
4-Surface Spraying	B:Fine sand texture
5-Spray Color	9004:RAL9004
6-Box Height	1U;2U
<p>Note: 1.MP2-1U can accommodate up to 5 cassettes. The blind plate is used to fill the gap when the box is not fully equipped with 5 modules. That is, under normal circumstances: the number of modules + the number of blind plates = 5;</p> <p>2.MP2-2U can accommodate up to 12 cassettes. The blind plate is used to fill the gap when the box is not fully equipped with 12 modules. That is, under normal circumstances: the number of modules + the number of blind plates = 12;</p>	



### Cassettes/Panel-MPB2

	MPB2 - EM - SP - B - 9004 - 2×12 - MPO/PC - LC/UPC - OM3
	1 2 3 4 5 6 7 8 9
1-Model	MPB2
2-Configuration	EM:empty box; AD:with adapter; AP:with adapter and jumper
3-Main material	SP:Cold rolled steel sheet
4-Surface spraying	B: Fine sand texture
5-Spray color	9004:RAL9004
6-Number of module jumpers	2×12:two 12F cables;1×24:one 24F cable;1×12:one 12F cable
7-Backend connector	MPO/PC; MPO/APC; MTP/PC; MTP/APC
8-Front end connector	LC/UPC; LC/APC; SC/UPC; SC/APC
9-Fiber optic connection type	G657A1; OM1; OM2; OM3; OM4; OM5
<p>Note: 1. Adapter requirements: ①、LC: Inline quadruple short ear type (asymmetric, plastic buckle);</p> <p>②、SC: Double short ear type;</p> <p>③、MPO: Standard flange, one key facing up and the other key facing down;</p> <p>④、MTP: Standard flange, USCONEC specified, one key facing up and the other key facing down;</p>	



**SHKE Communication Tech Co.,Ltd.**

Add: 301, Factory Building 1, Nangang 2 Industrial Park,  
No.1026 Songbai Road, Sunshine Community,  
Xili Street, Nanshan District, Shenzhen, China  
P.C.:518108

E-mail: [market@shke.com.cn](mailto:market@shke.com.cn)

Web: [www.shke.com.cn](http://www.shke.com.cn)

---

Copyright ©202508 SHKE Communication Tech Co.,Ltd All Rights Reserved.