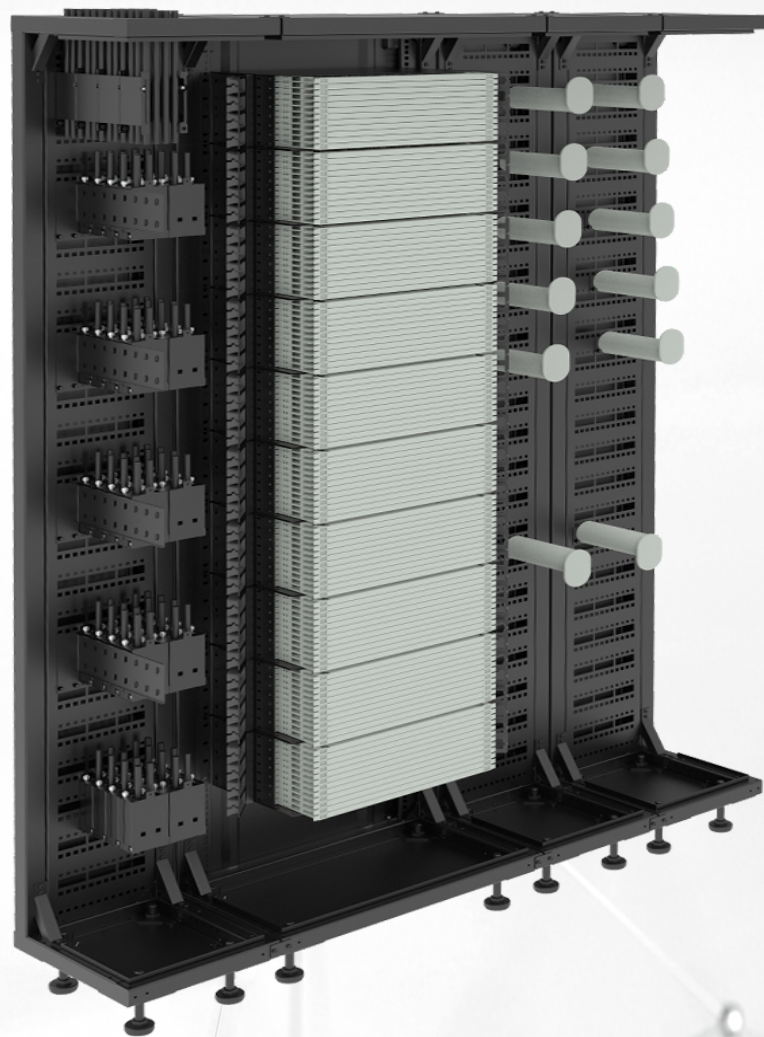




High Density Fiber Distribution Frame – SNL1

Data center wiring system: cabinets, unit boxes, integrated trays



- The maximum effective installation space of the cabinet is 40U, and the number of cores can reach up to 5760
- Can be fused, splitter-connected, MPO/MTP-connected, jumpered, and TAP-connected
- The front cable management plate of the integrated tray can be flipped down, and the ports are compatible with SC, LC, MPO, and MTP

Description

In order to comply with the current data center construction requirements and future data center development trends, SHKE has developed the SNL1 data center wiring system. The system consists of a cabinet frame, unit box, integrated tray and a series of wiring accessories. The cabinet frame includes a main cabinet and a sub-cabinet, which is compact and maximizes the available density. The main cabinet provides unit box installation, and the sub-cabinet provides wiring space for incoming and outgoing lines. The cabinet frame can be installed in a hoisting, floor or wheeled manner, and can be combined in a straight line or back to back. The wiring accessories ensure that the optical cable has sufficient bending radius in the route and maintains excellent optical performance; it focuses on providing an easy and reliable experience during installation and the entire maintenance process. The SNL1 system provides a flexible, reliable and cost-effective solution for your evolving network needs.

Features



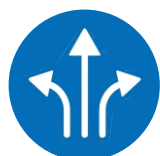
High Performance

- The triangular support is strengthened, the structure is stable, high strength and not easy to deform
- Electrostatic powder spraying, strong adhesion, strong corrosion resistance, simple and beautiful
- The cabinet frame is made of high-quality high-strength square tube, and the other parts are made of high-quality engineering cold-rolled steel plates.
- The integrated tray is made of high-quality engineering plastic PC+ABS, which is sturdy and durable; the structure is reasonable and easy to operate.



Large Capacity

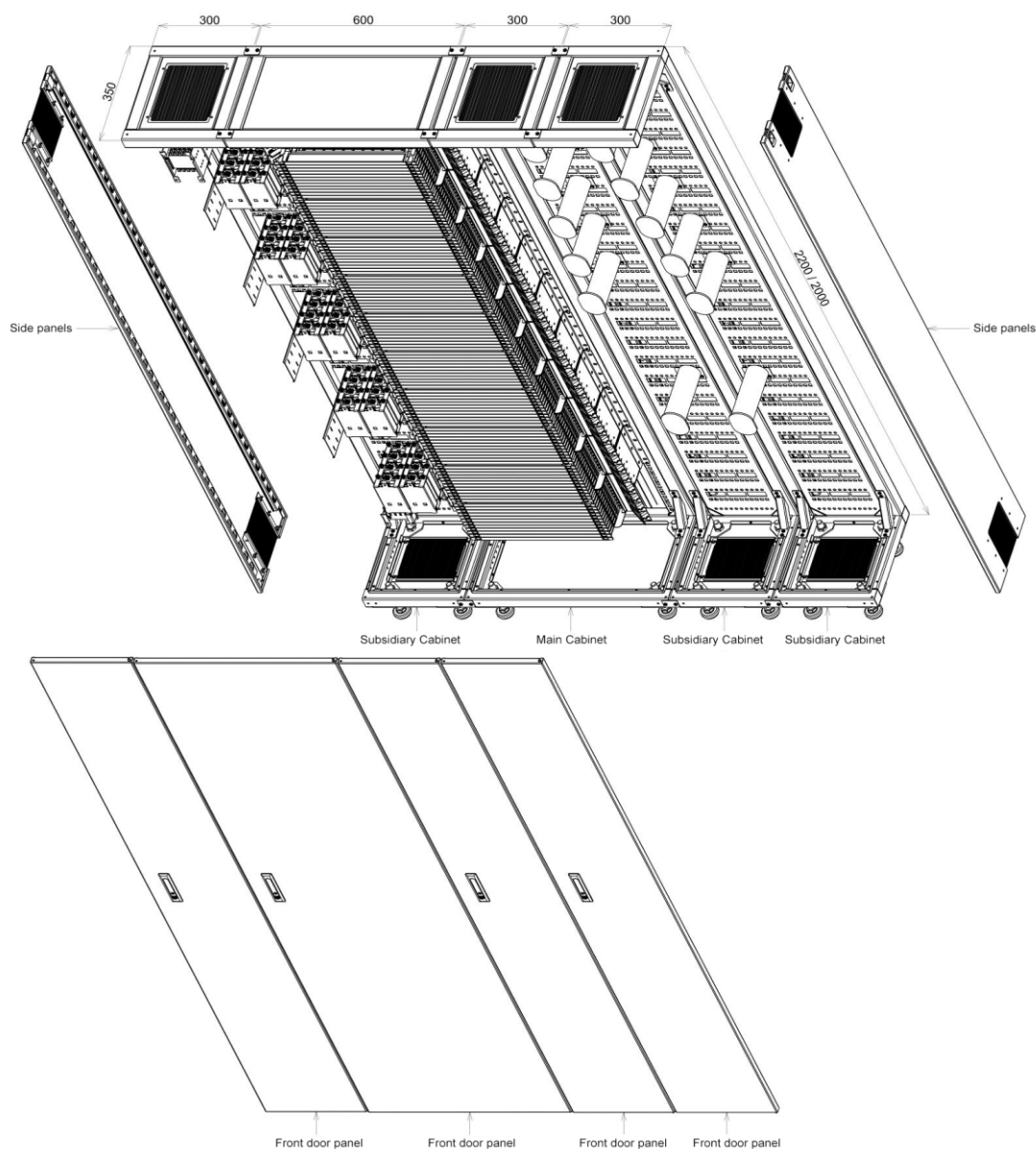
- 1U height can be installed with 3 integrated trays, that is, 1U can accommodate up to 144 cores
- The effective installation space of the tray in a 2200mm high cabinet is 40U, which means the number of cores can reach up to 5760
- The effective installation space of the tray in a 2000mm high cabinet is 36U, which means the number of cores can reach up to 5184 cores.
- MPO/MTP adapter: 3 12-core MPO/MTP - LC; 1 12-core MPO/MTP - SC



High Flexibility

- The unit box structure is universal, and 1U~6U can be freely selected
- Ports compatible with SC, LC, MPO, MTP
- The integrated tray can be pulled out, and the front cable management Zplate can be flipped down to facilitate connector plugging and unplugging operations
- Can be fused, splitter-connected, MPO/MTP-connected, jumpered, and TAP-connected

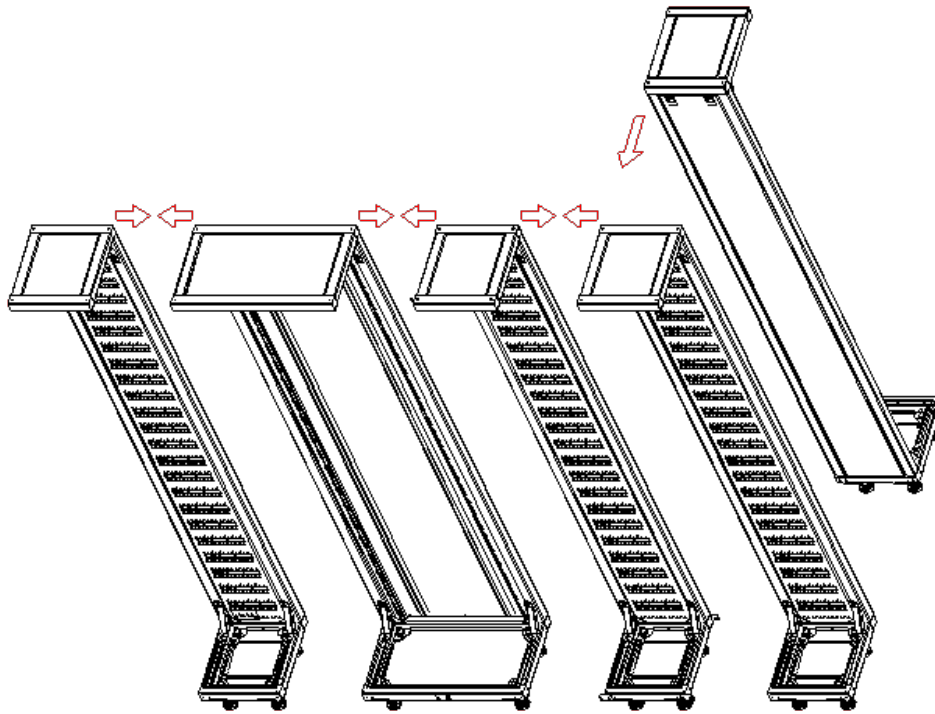
Cabinet Structure



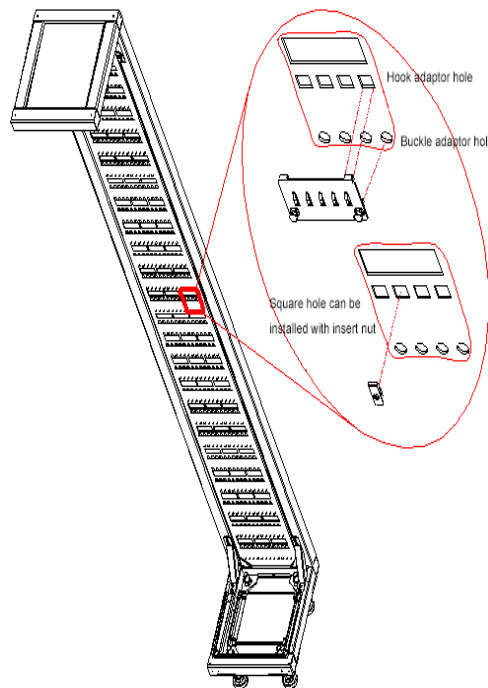
Performance parameters

Mechanical properties	
Usage Environment	Indoor
Operating temperature	-25°C ~ +55°C
Storage temperature	-25°C ~ +55°C
Relative humidity	≤93%(+40 °C)
Atmospheric pressure	70kPa ~ 106kPa
Cabinet material	Steel
Eligibility Criteria	YD/T 778
Compliance/Certification	RoHS

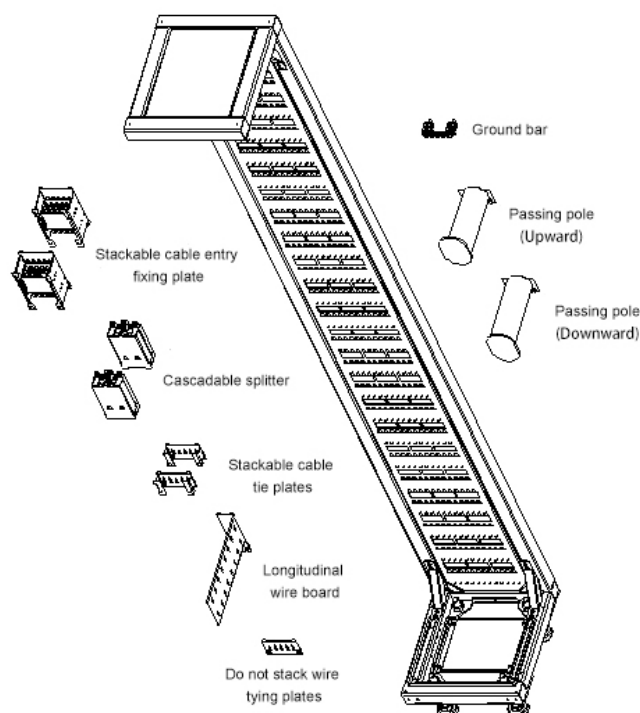
Product Advantages



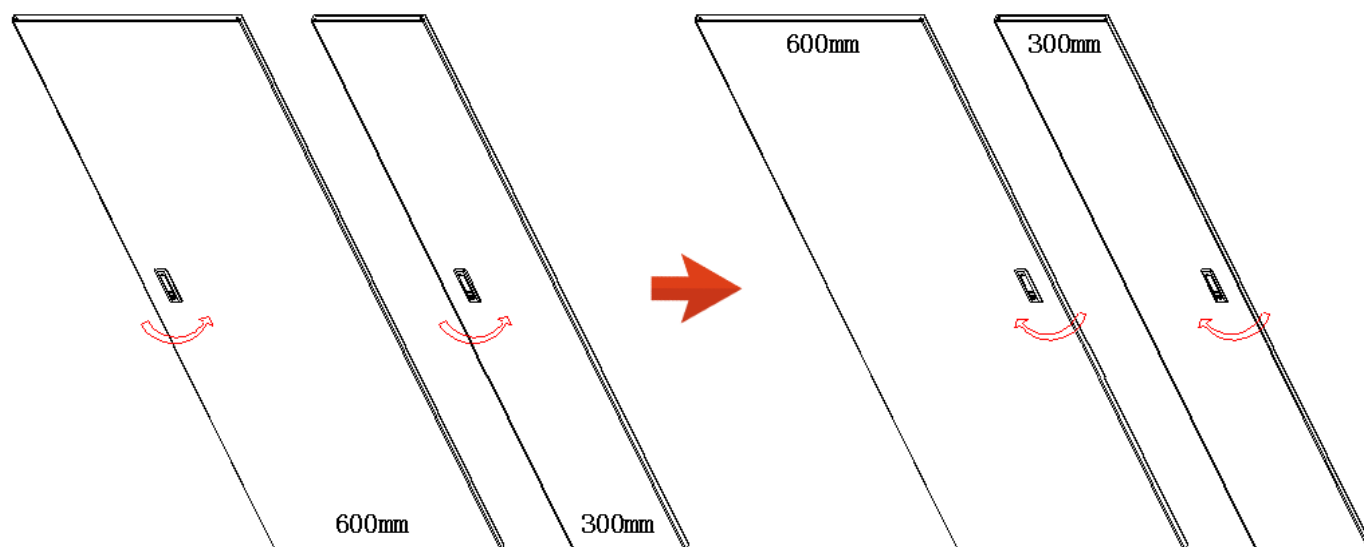
1. The cabinets can be combined in a straight line and back to back according to the needs. After the cabinets are combined, a row of cabinets are connected into a whole, eliminating the two front columns of the traditional cabinets, and the front operation is unobstructed, making wiring and operation more convenient



2. The sub-cabinet is arranged in a matrix with square holes and round holes. The square holes can be adapted to the hooks of accessories and can also be used to add insert nuts in the front; the round holes can be adapted to convenient push-on buckles; accessories with hooks and buckles can be quickly installed on the sub-cabinet without tools.

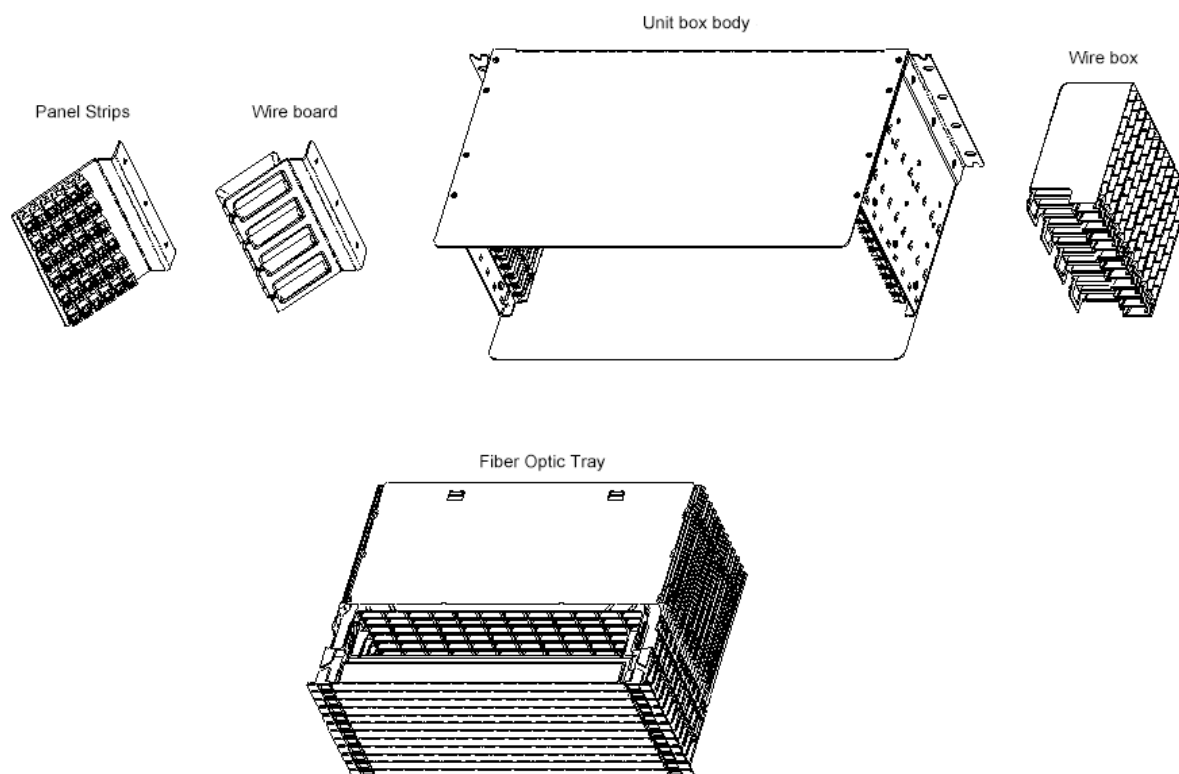


3. The general structure of the auxiliary cabinet body can be equipped with different accessories according to needs to achieve cabinets with different functions such as incoming/outgoing/transition.



4. The door panels are available in two widths: 600mm and 300mm. The door panels of the main cabinet and the sub-cabinet are universal, and two sub-cabinets can share a 600mm door panel; the door panel can be installed by flipping 180 degrees up and down, thereby changing the rotation direction of the door panel when opening.

Unit Box Structure



Performance parameters

Mechanical properties	
Usage Environment	Indoor
Operating temperature	-25°C ~ +55°C
Storage temperature	-25°C ~ +55°C
Relative humidity	≤93%(+40 °C)
Atmospheric pressure	70kPa ~ 106kPa
Tray material	PC+ABS
Box material	Steel
Eligibility Criteria	YD/T 778
Compliance/Certification	RoHS
Tray size (WxDxH)	418.5mm×289.5mm×13.5mm
Box size (WxDxH)	483mm×245mm×1~6U

Fiber Tray Structure

Integrated tray optional configuration	
Pigtail Splicing	LC: 48 Fiber
	SC: 24 Fiber
Splitter	1 1-to-16SC
	2 1-to-8SC
	2 1-to-16LC
	4 1-to-8LC
MPO/MTP to LC/SC	3 12-Fiber MPO/MTP - LC
	4 8-Fiber MPO/MTP - LC
	1 12-Fiber MPO/MTP - SC

Three integrated trays can be arranged per 1U. The following figure shows a 4U box.



1. Tray closed



2. The entire tray can be pulled outwards

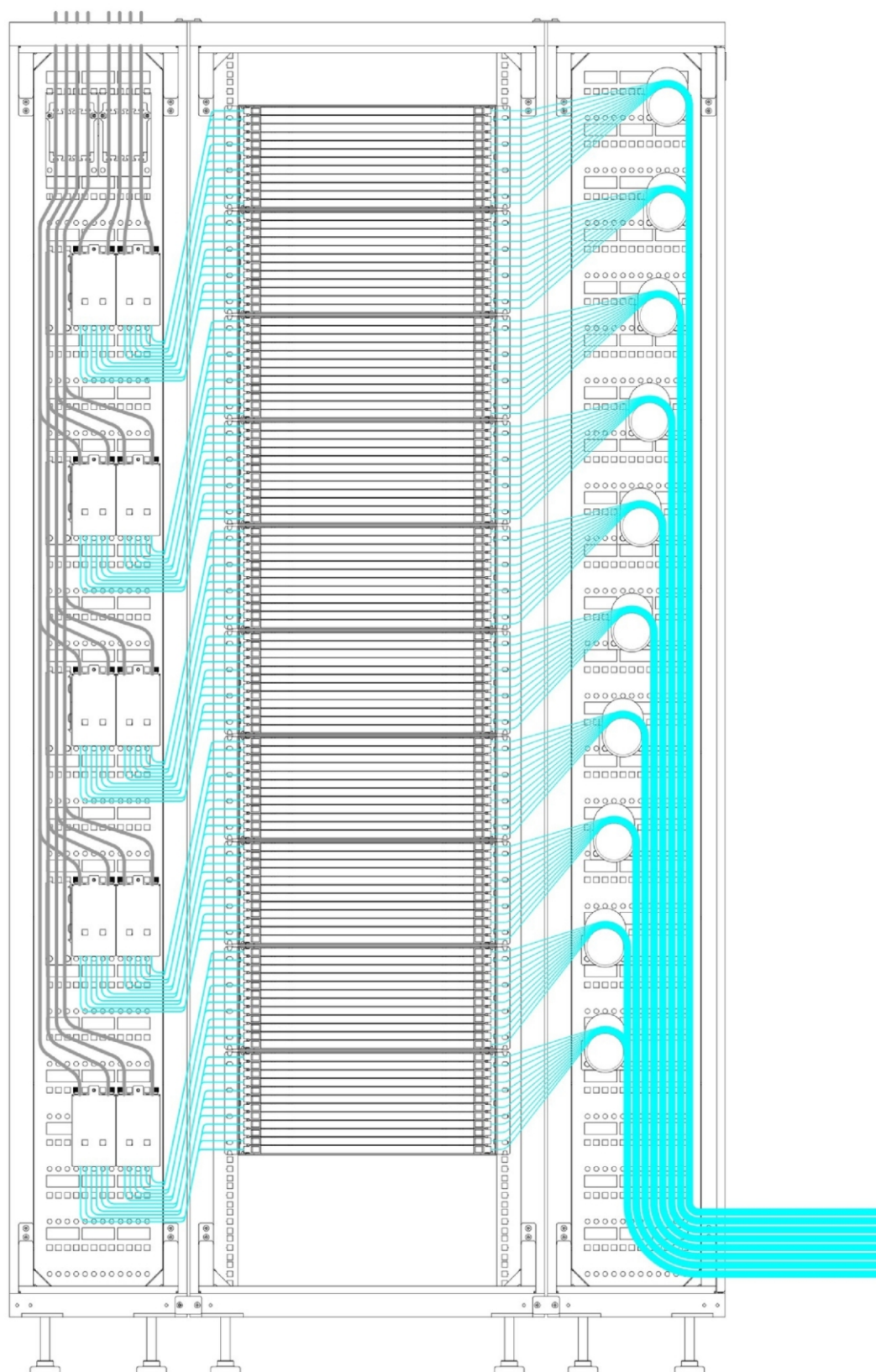


3. The cable management plate in front of the tray can be pulled outwards

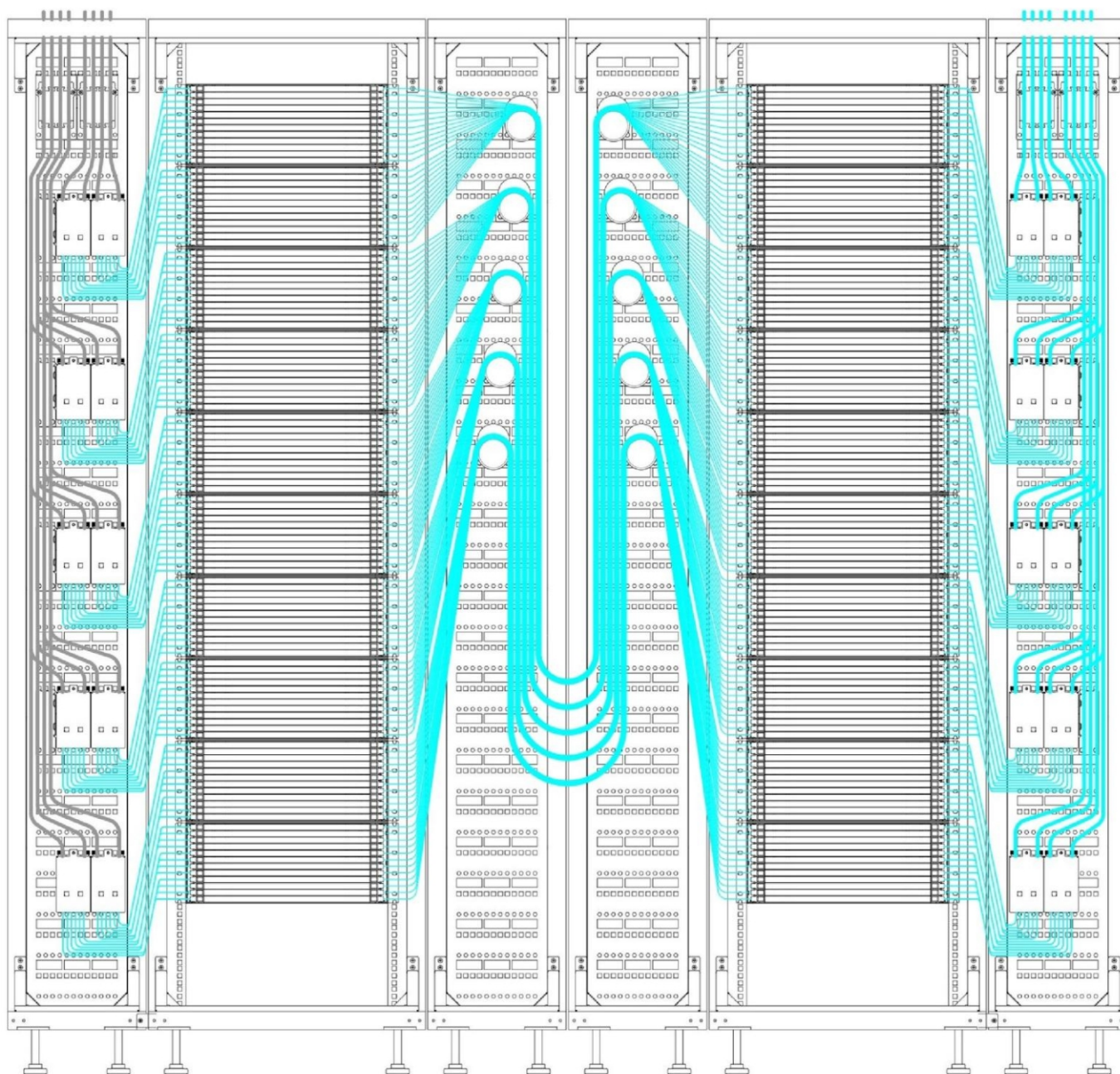


4. The cable management plate in front of the tray can be flipped down for easy cable management

Typical Configuration



Interconnection



Cross Connect



SHKE Communication Tech Co.,Ltd.

Add: 301, Factory Building 1, Nangang 2 Industrial Park,
No.1026 Songbai Road, Sunshine Community,
Xili Street, Nanshan District, Shenzhen, China
P.C.:518108

Tel: +86 755 8253 5150 8253 5380

Fax: +86 755 8253 5230

E-mail: market@shke.com.cn

Web: www.shke.com.cn

Copyright ©2025 SHKE Communication Tech Co.,Ltd All Rights Reserved.