

Ultrahigh Density MTP/MPO System

MP2

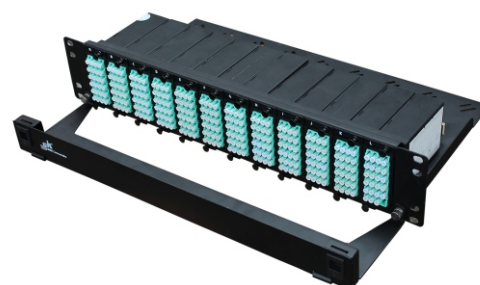
Description

The fiber system has a higher and higher demand on fiber optic connectors with the changes from single mode fiber to multi-mode fiber, from 10G to 40G, 100G. Ethernet transmission of 40G and 100G also becomes the developing trend in data center cabling system. Traditional connectors are more and more difficult to achieve Multi-Fiber and High-performance. According to the International standard, high density MTP/MPO connector has been a standard port in the Ethernet transmission of 40G and 100G.

SHKE develops a high density MTP/MPO cabling solution with it's constant innovation in the field. The MTP/MPO is a standard mini, high-density connector, equipped with Multi-fiber cable, which makes the connection stable and reliable. The connection and testing of high density connector with ribbon cable are finished in factory, so that it can be plugged and played with the equipments on site directly, and support the rapid deployment at users' data center, which makes MTP/MPO cabling system become an ideal solution with the growing demands on high-capacity cabling data center. Simple installation, compact design, high precision, plug and play, etc.



MP2-1U



MP2-2U

Features

- 19"rack mount, the panel and modules are made of cold rolled steel sheet,it can be installed in the rack or
- Modular in design with higher density, special mini module comes up to 24 LC or 12 SC adapter ports and switch to MTP/MPO connection.
- 1U patch panel capacity come up to 120F fully loaded with 5 modules.2U patch panel capacity come up to 288F fully loaded with 12modules.
- Unique tool-free installation design for easy and fast assembly and installation.
- Factory pre- terminated module, plug and play on site, no need fiber splicing and cable wiring which saves labor
- This system can also support application of optoelectronic hybrid with Standard RJ45 keystone jack , achieve the function of network distribution and cover a wider application.
- Front cable management is made of Acrylic Plate.Front and door can be opened.Convenient for cable

Specification

ITEM	CHARACTERISTICS
Operation Temperature	-20°C~+55°C
Storage Temperature	-20°C~+60°C
Relative Humidity	≤85%(+30°C)
Air Pressure	70kPa~106kPa
Dimensions (W x D x H)	483mm×364mm×1U

Ordering Information

MP2	SP	B	9004	2X12	MTP/PC	LC/UPC	OM3	3MD	OBP	1U
1	2	3	4	5	6	7	8	9	10	11

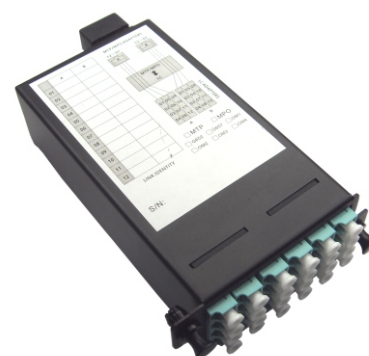
1 - Model	MP2
2 - Body Materials	SP: SPCC(cold rolled steel sheet)
3 - Painting Finish	B: powder coat matt finish
4 - Painting Color	9004: RAL black
5 - Patch cord Quantity	2×12 : 2pcs of 12F ; 1×24 : 1pc of 24F ; 1×12 : 1pc of 12F, etc.
6 - Connector A	MPO/PC; MPO/APC; MTP/PC; MTP/APC
7 - Connector B	LC/UPC; LC/APC; SC/UPC; SC/APC
8 - Fiber Mode	G657A1; OM1; OM2; OM3; OM4; OM5
9 - Module Quantity	1MD; 2MD; 3MD; 4MD; 5MD; 6MD; 7MD; 8MD; 9MD; 10MD; 11MD; 12MD....24MD.
10 - Baffle Quantity	OBP: w/o baffle; 1BP: with 1 baffle; 2BP: with 2 baffle; 3BP,4BP,etc
11 - Panel Height	1U :2U

Note: 1. MP2-2U fully loaded with 12 Cassettes.
 2. Baffles are used where modules are not installed.
 3. Empty frame w/o Module Description:MP2-SP-B-9004-EM-1U/2U.

MPO/MTP-LC Cassettes

Configuration

Material	SPCC(cold rolled steel sheet)
Color	Black
(front)Adapter type	LC quad (w/o flange)×6Pcs
(front)Adapter color	Aqua green: OM3; Violet: OM4; Lime green: OM5; Beige: OM1/OM2; Blue: SM-UPC; Green: SM-APC
(rear)Adapter type	MPO/MTP(Full flange/Opposed)
(rear)Adapter color	Black
Connector A	SM :LC-UPC,0.9mm or LC-APC,0.9mm MM:LC-UPC,0.9mm
Connector B	SM : MPO/MTP(male)-APC MM: MPO/MTP(male)-PC
Patch cord polarity	TypeA
Weight	220g
Dimensions (W x D x H)	88mm×118mm×34mm



MPO/MTP-LC Cassettes

Optical Performance

Type	Wavelength	Module I.L. Max
MTP-LC(MM)	850nm/1300nm	0.50dB
MTP-LC(SM)	1310nm/1550nm	1.30dB
MPO-LC(MM)	850nm/1300nm	0.75dB
MPO-LC(SM)	1310nm/1550nm	1.50dB

Ordering Information

MPB2	SP	B	9004	2X12	MTP/PC	LC/UPC	OM3
1	2	3	4	5	6	7	8

1 - Model	MPB2
2 - Body Materials	SP: SPCC(cold rolled steel sheet)
3 - Painting Finish	B: powder coat matt finish
4 - Painting Color	9004: RAL black
5 - Patch cord Quantity	2×12 : 2pcs of 12F ; 1×24 : 1pc of 24F ;
6 - Connector A	MPO/PC; MPO/APC; MTP/PC; MTP/APC
7 - Connector B	LC/UPC; LC/APC;
8 - Fiber Mode	G657A1; OM1; OM2; OM3; OM4; OM5

MPO/MTP-SC Cassettes

Configuration

Material	SPCC(cold rolled steel sheet)
Color	Black
(front)Adapter type	SC Duplex (w/o flange)×6Pcs
(front)Adapter color	Aqua green: OM3; Violet: OM4; Lime green: OM5; Beige: OM1/OM2; Blue: SM-UPC; Green: SM-APC
(rear)Adapter type	MPO/MTP(Full flange/Opposed)×1Pcs
(rear)Adapter color	Black
Connector A	SM :SC-UPC,0.9mm or SC-APC,0.9mm MM:SC-UPC,0.9mm
Connector B	SM : MPO/MTP(male)-APC-12F MM: MPO/MTP(male)-PC-12F
Patch cord polarity	TypeA
Weight	220g
Dimensions (W x D x H)	88mm×118mm×34mm



MPO/MTP-SC Cassettes

Optical Performance

Type	Wavelength	Module I.L. Max
MTP-SC(MM)	850nm/1300nm	0.50dB
MTP-SC(SM)	1310nm/1550nm	1.30dB
MPO-SC(MM)	850nm/1300nm	0.75dB
MPO-SC(SM)	1310nm/1550nm	1.50dB

Ordering Information

<u>MPB2</u>	<u>SP</u>	<u>B</u>	<u>9004</u>	<u>2X12</u>	<u>MTP/PC</u>	<u>SC/UPC</u>	<u>OM3</u>
1	2	3	4	5	6	7	8

1 - Model	MPB2
2 - Body Materials	SP: SPCC(cold rolled steel sheet)
3 - Painting Finish	B: powder coat matt finish
4 - Painting Color	9004: RAL black
5 - Patch cord Quantity	2×12 : 2pcs of 12F ; 1×24 : 1pc of 24F ;
6 - Connector A	MPO/PC; MPO/APC; MTP/PC; MTP/APC
7 - Connector B	LC/UPC; LC/APC;
8 - Fiber Mode	G657A1; OM1; OM2; OM3; OM4; OM5

RJ45 Module

Configuration

Material	SPCC(cold rolled steel sheet)
Color	Black
Adapter type	RJ45×3Pcs
Adapter color	Black
Weight	50g
Dimensions (W x D x H)	88mm×22mm×34mm



RJ45 Module

Ordering Information:

Product Description: AP - MP2 - SP - B - 9004 - AD - 3RJ45 - CAT5e
Note: CAT5e, CAT5, CAT6 are optional.

Baffle Panel

Configuration

Material	SPCC(cold rolled steel sheet)
Color	Black
Weight	21g
Dimensions (W x D x H)	88mm×1.5mm×34mm



Baffle Panel

Ordering Information

Product Description: BP - MP2 - SP - B - 9004 - EM
--