

### **Applications:**

- CATV
- Video
- Active Device Termination
- Premise Installations
- Telecommunication Networks
- Local Area Networks (LANs)
- Data processing networks
- Wide Area Networks (WANs)
- Industrial, medica & military

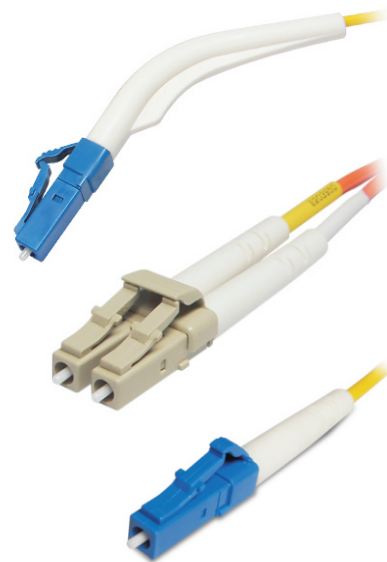
### **Features:**

- Simplex or duplex
- PC or APC end-face finishing
- Singlemode or Multimode
- 3.0mm、 2.0mm or 0.9mm
- RJ-45 style housing with push-pull coupling mechanism
- Compliant with Telcordia GR-326-CORE specification

### **Description:**

Fiber optic patchcord are used for linking the equipment and components in the fiber optic network. They are with various kinds of fiber optic connector types. the fiber optic patch cord types are classified by the fiber optic connector types. For example, we name LC fiber optic patch cord because this cable is with LC fiber optic connector. There are PC, UPC, APC type fiber patch cord. They are different because of the polish of fiber connectors.

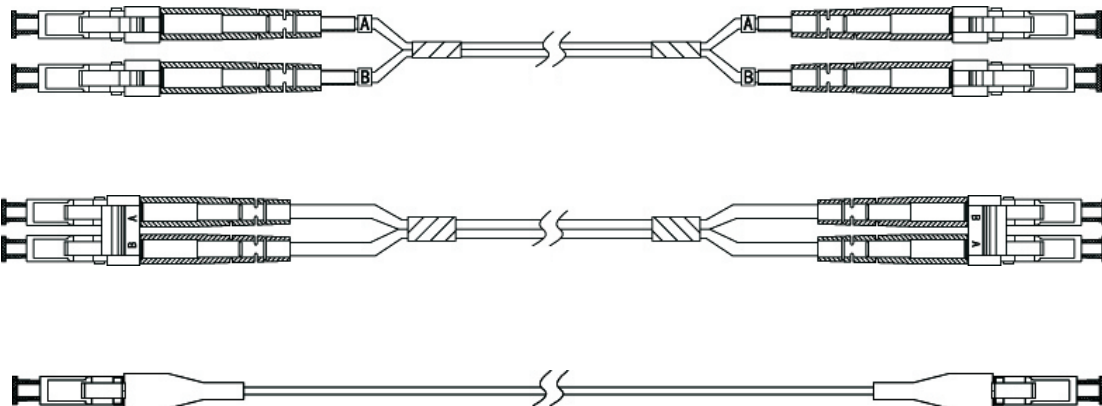
Fiber optic patch cord are with various kinds of cables, PVC, Riser, Plenum, OFNR, OFNP, LSZH (LSOH), 10 Gig Aqua. There are simplex, duplex and multi fiber cable assemblies, and there are ribbon fan out fiber cable assemblies and bundle fiber optic cable assemblies. Typical fiber optic patch cord cable diameter can be 0.9mm, 2mm, or 3mm.




### Specifications:

Parameters	Test Condition	Value(dB)	
		Multimode	Singlemode
Insertion Loss	0.85/1.3um or 1.31/1.55um	≤0.3	≤0.3
Return Loss	0.85/1.3um or 1.31/1.55um	≥35	≥50 (APC≥60)
Interchangeability	Connect Randomly	<0.2	<0.2
Vibration	5~50Hz, 1.5mm Amplitude	<0.1	<0.1
Tensile Strength	0~15Kgf (0.9mm Exception)	<0.1	<0.1
High Temperature	+85℃, During 100 Hours	<0.2	<0.2
Low Temperature	-40℃, During 100 Hours	<0.2	<0.2
Temperature Cycle	-40℃~+85℃, during 5 Cycles	<0.2	<0.2
Humidity	+25℃~+65℃, 93% R. H, 100 hours	<0.2	<0.2

### Drawing:



 All product outward appearance, the color take the material object as, the picture only supply the reference.