


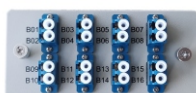
## wall-mounted fiber optical distribution box

Features	Application	 GPX10W2
<ul style="list-style-type: none"> <li>● single door opening with anti-theft lock for easy installation and maintenance</li> <li>● Wall mounting method, tight structure design</li> <li>● Can meet 12, 24, 48 core fiber connection</li> </ul> <p>The panel is fixed with a buckle,</p> <ul style="list-style-type: none"> <li>● easy to disassemble and install, and secure to fix</li> </ul>	<ul style="list-style-type: none"> <li>● Optical communication system</li> <li>● FTTH</li> <li>● Wide Area Network</li> <li>● Local area network</li> <li>● Cable TV network</li> </ul>	



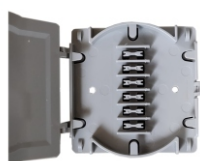
GPX10W2

- The panel is made of cold-rolled steel  
Surface electrostatic spraying
- The welding wiring of the box body adopts separated structure
- Reliable cable fixing, stripping protection device
- Four  $\Phi$  22mm optical cable access holes for easy installation and maintenance



Adapter panel

- The adapter panel is made of cold-rolled steel
- Various adapters such as FC, SC, ST, LC (SC type) and DIN (FC type) can be installed according to the interface type.



Splice Tray

- Splice Tray is made of molded plastic
- Layered structure, easy to operate
- The capacity of splice tray for 12 fibers
- Maximum capacity up to 24 cores
- Good sealing, easy to open repeatedly

## Specification

ITEM	CHARACTERISTICS
Operation Temperature	-25° C~+40° C
Storage Temperature	-25° C~+40° C
Relative Humidity	≤85% (+30° C)
Air Pressure	70kPa~106kPa
Dimensions (W x D x H)	230mm×180mm×55mm